

Because Lives, Property and Businesses Aren't Fireproof.

# HARRINGTON SIGNAL INC. FIRE ALARM

## HS, YB SERIES Smoke/Heat Detector Bases

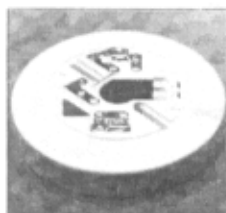
Harrington Signal Inc.  
2519 4th Avenue, Moline, Illinois 61265  
P.O. Box 590, Moline, Illinois 61266-0590  
Direct: (800)577-5758 Phone: (309) 762-0731 Fax: (309) 762-8215

Internet: [www.harringtonsignal.com](http://www.harringtonsignal.com)



**HSB-(X) SMOKE  
DETECTOR BASE**

The HSB-Smoke Detector Base Series is designed specifically for use with the Harrington Smoke Detector Models SIH-24F, SLK-24F, SLK-24FL, SLK-24FH, and Fixed Temperature Heat Detector Models AL-DFE-135 and AL-DFE-190. The HSB-Series is a 6" polarized base with annunciator output featuring a current limiting resistor, transient protection, and a blocking diode to enhance annunciator function. The HSB-200 is available for applications not requiring current limiting.



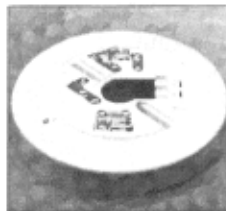
**HSB-(X)R SMOKE  
DETECTOR BASE**

The HSB-R Smoke Detector Base Series is designed specifically for use with the Harrington Smoke Detector Models SIH-24F, SLK-24F, SLK-24FL, SLK-24FH, and Fixed Temperature Heat Detector Models AL-DFE-135 and AL-DFE-190. The HSB-R Series is a 6" base with two Form C (DPDT) contacts (1 amp at 30VDC and 0.5 amp at 125VAC) where relay contacts are required as a function. Underwriters Laboratories approved for releasing device service. Model HSC-4R is available for 4 wire applications.



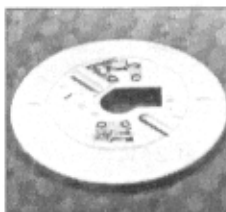
**YBA-M(X) SMOKE  
DETECTOR BASE**

The YBA-M Smoke Detector Base Series is designed specifically for use with the Harrington Smoke Detector Models SIH-24F, SLK-24F, SLK-24FL, SLK-24FH, and Fixed Temperature Heat Detector Models AL-DFE-135 and AL-DFE-190. The HSB-Series is a 4" polarized base with annunciator output featuring a current limiting resistor, transient protection, and a blocking diode to enhance annunciator function.



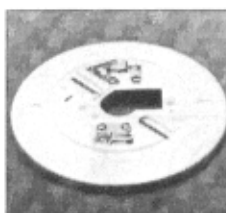
**HSC-(X)L HEAT  
DETECTOR BASE**

The HSC-L Heat Detector Base Series is designed specifically for use with the Harrington Fixed Temperature Heat Detector Models AL-DFE-135 and AL-DFE-190. The HSC-L Series is a 6" base featuring a current limiting resistor, latching annunciator output, and a latching circuit so the alarm LED will remain lit until the control panel has been reset. Heat detectors are not recognized as proper detection for life safety protection, but should be utilized only in the protection of property.



**HSB-100 HEAT  
DETECTOR BASE**

The HSB-100 Heat Detector Base is designed specifically for use with the Harrington Fixed Temperature Heat Detector Models AL-DFE-135 and AL-DFE-190. The HSB-100 is a 6" diameter base that has no current limiting nor annunciator output features. A direct short occurs across the loop when the detector is actuated. Heat detectors are not recognized as proper detection for life safety protection, but should be utilized only in the protection of property.

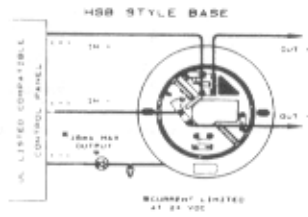


**aHSB-12-(X) 12  
VOLT SMOKE  
DETECTOR BASE**

The HSB-12 Smoke Detector Base Series is designed specifically for use with the Harrington 12 volt Smoke Detector Model SLK-12. The HSB-Series is a 6" base available in polarized and non-polarized versions. The polarized models offer annunciator output. The non-polarized models has no annunciator output. Currently, only Model HSB-12-1 and HSB-12-1N are UL Approved. NOTE: Optional 4" base available, contact factory for more details. Manufactured by Hochiki.

# HSB-(X), HSC-(X), YBA-M(X), HSC-(X)L, HSB-12-(X), HSB-100 Detector Bases

## HSB-(X) Smoke detector base

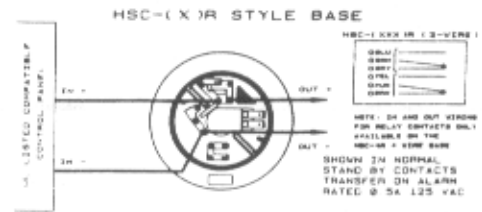


Nominal alarm current shown at 24V.  
Polarized with annunciator output.

HSB-2	19mA
HSB-21	25mA
HSB-225	33mA
HSB-224	43mA
HSB-220	84mA
HSB-221	46mA

HSB-200 (not current limited)

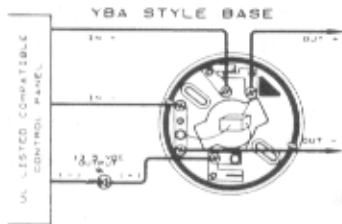
## HSC-(X)R Smoke detector relay base



Nominal alarm current shown at 24V.  
Polarized with annunciator output.

HSC-221R	45mA
HSC-220R	81mA
HSC-224R	41mA
HSC-4R	43mA (4 wire)

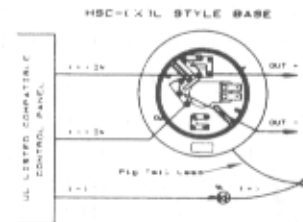
## YBA-M(X) Smoke detector base



Nominal alarm current shown at 24V.  
Polarized with annunciator output.

YBA-M2	19mA	YBA-M225	35mA
YBA-M21	25mA	YBA-M220	85mA
YBA-M22	85mA	YBA-M221	48mA
		YBA-M224	45mA

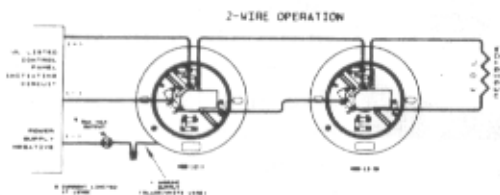
## HSC-(X)L Heat detector base



Nominal alarm current shown at 24V.  
Polarized with annunciator output.

HSC-21L	24mA
HSC-225L	32mA
HSC-221L	41mA
HSC-220L	73mA

## HSB-12-(X) 12V Smoke detector base



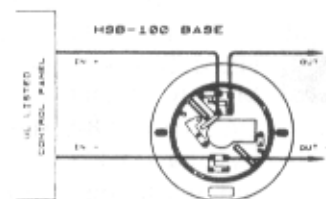
Nominal alarm current shown at 12V.  
Polarized with annunciator output.

HSB-12-1	42mA	HSB-12-2	29mA
HSB-12-3	27mA		

Nominal alarm current shown at 12V.  
Polarized with annunciator output.

HSB-12-1N	42mA	HSB-12-2N	29mA
HSB-12-3N	27mA		

## HSB-100 Heat detector base



Non-polarized, not current limited.  
No annunciator output.